

MAGNA PRODUCTS

FILTRATION SYSTEMS

MOTOR GUARD

Body Shop Requirements
From Pulling to Painting



1966 ~ 2016

COMPRESSED AIR FILTERS

- THE ULTIMATE DEFENSE FROM DAMAGING DIRTY AIR
- A SUB-MICRONIC COMPRESSED AIR FINAL FILTER FOR ALL CRITICAL APPLICATIONS

REFINISHING

The perfect final filter. Eliminates paint failures caused by particulate, moisture, and oil aerosol contaminants as small as .01 microns.

AIR TOOLS

The air tool savior. Extends the life of your tools by protecting bearings and precision parts from dirty, oily, watery contaminants.

PLASMA CUTTING

The essential accessory for plasma cutters. Increases the efficiency and tip life of your plasma cutter by removing moisture and oil aerosols from your compressed air line.

The filters are available individually (M-30, M-40 or M-60), or in kits: M-45 contains an M-30 with two spare M-723 elements, M-100 contains an M-60 with two spare M-723 elements. Users of these filters report contaminant free air with higher flow rates and minimal pressure drops.

ACTIVATED CARBON

The new Motor Guard M-C100 Activated Carbon Filter removes oil vapor from compressed air. The exclusive Carbon-Max® Cartridge contains activated carbon media that traps oil and other molecules in microscopic pores through the adsorption process. The filter delivers air to the spray gun that is virtually free from oil vapor.

SUBMICRONIC



DISPOSABLE

SPRAY GUNS

Clean dry oil-free air at your spray gun. Designed to remove the smallest contaminant particle, oil aerosol or drop of moisture.

D-12 HVLP Approved 30 CFM with lowest pressure drop. Traps particles as small as .01 microns. Ends painting failures caused by dirty, oily, watery air.
DD-1008 Only Spray Gun Filter with color change indicator. Filters moisture, oil, particulate and vapor, four stages. Desiccant beads absorb water vapor for a -40F dew point.

AIR TOOLS

Extends the life of your air tools by protecting bearings and precision parts from dirty, oily, watery contaminants.

AS-4028 Rugged filter, tough enough to mount directly on the tool. Protects all precision parts from damaging dirty air. Element unscrews for cleaning and replacement.



SPECIFICATIONS

Model No.	Pipe Size	Max. Flow @80 PSI	Maximum Pressure	Removal Rating (NOM.)	Size	Replacement Element No.
M-30	1/4" NPT	45 CFM	125 PSI	.01 Microns	5" x 7"	M-723
M-40	3/8" NPT	60 CFM	125 PSI	.01 Microns	5" x 7"	M-723
M-60	1/2" NPT	100 CFM	125 PSI	.01 Microns	5" x 7"	M-723
M-C100	1/2" NPT	100 CFM	125 PSI	<.01 ppm	5" x 7"	M-785C

Model No.	Application	Pipe Size	Max. Flow @80 PSI	Maximum Pressure	Removal Rating (NOM.)	Size	Replacement Element No.
D-12	Spray Gun	1/4" NPS/NPT	30 CFM	100 PSI	.01 Microns	2 1/2" x 2 1/2"	N/A
DD-1008	Spray Gun	1/4" NPS/NPT	20 CFM	100 PSI	5 Microns	3 1/2" x 1 1/2"	N/A
AS-4028	Air Tool	1/4" NPS/NPT	25 CFM	100 PSI	40 Microns	2 1/4" x 3/4"	EL4058

COMPRESSED AIR FILTERS - S.A.M.S.



M-800

SHOP AIR MANAGEMENT SYSTEM

A Water, Particulate, Oil Filter and Regulator, sized for the shop with compressors up to 30 H.P.

Model No.	Description	Pipe Size	Nominal Air Flow	Maximum Pressure	Maximum Temperature	Filtration Rating
M-800	S.A.M.S.	3/4 NPT	120 CFM	250 PSI	150 F	.01 Micron

COMPRESSED AIR FILTERS - PREP

AIR CONTROL UNIT

A compact, high flow Regulator/Filter for point of use air control.

Model No.	Description	Pipe Size	Nominal Air Flow	Maximum Pressure	Maximum Temperature	Filtration Rating
AC-4525	Air Controller	1/2 NPT	100 CFM	150 PSI	125 F	40 Micron
AC-4535	Air Controller	1/2 NPT	100 CFM	150 PSI	125 F	5 Micron



AC-4535

COMPRESSED AIR FILTERS-COMPONENTS

High quality components for the ultimate in Clean, Dry, Oil Free shop air.

PARTICULATE/WATER

Model No.	Description	Pipe Size	Nominal Air Flow	Maximum Pressure	Maximum Temperature	Filtration Rating
M-30	Sub-Micronic	1/4 NPT	45 CFM	125 PSI	175 F	.01 Micron
M-60	Sub-Micronic	1/2 NPT	100 CFM	125 PSI	175 F	.01 Micron
AF-4510	Particulate	1/2 NPT	100 CFM	250 PSI	160 F	40 Micron
M-300	Ambush	1/2 NPT	160 CFM	175 PSI	160 F	5 Micron
M-810	S.A.M.S.	3/4 NPT	230 CFM	250 PSI	175 F	40 Micron

M-300



OIL COALESCING

Model No.	Description	Pipe Size	Nominal Air Flow	Maximum Pressure	Maximum Temperature	Filtration Rating
M-30	Sub-Micronic	1/4 NPT	45 CFM	125 PSI	175 F	.01 Micron
M-60	Sub-Micronic	1/2 NPT	100 CFM	125 PSI	175 F	.01 Micron
CO-4515	Oil Removing	1/2 NPT	50 CFM	250 PSI	160 F	.01 Micron
M-820	S.A.M.S.	3/4 NPT	120 CFM	250 PSI	150 F	.01 Micron

M-200



COMPRESSED AIR REGULATORS

DIAPHRAGM

Model No.	Description	Pipe Size	Nominal Air Flow	Maximum Pressure	Maximum Temperature	Outlet Range
RG-4049	Mini Reg	1/4 NPT	25 CFM	250 PSI	120 F	2-125 PSI
RF-1	Reg. / Filter	1/4 NPT	25 CFM	125 PSI	120 F	2-125 PSI
RG-4520	Regulator	1/2 NPT	100 CFM	300 PSI	120 F	2-125 PSI
M-200	Controller	1/2 NPT	215 CFM	300 PSI	120 F	2-125 PSI
M-830	S.A.M.S.	3/4 NPT	250 CFM	300 PSI	120 F	2-125 PSI

RF-2011



COMPRESSED AIR TANK DRAINS

Model No.	Pipe Size	Drain Time	Cycle Time	Maximum Pressure	Maximum Temperature	Electrical
RF-2011	1/4 NPT	1-30 Sec.	1-60 Min.	200 PSI	35-165 F	115VAC

MODEL DESCRIPTION PURPOSE SPECIFICATIONS



RF-2055	Refrigerated Dryer	Removes moisture from compressor discharge by lowering temperature. An efficient and economical way of providing dry air throughout the shop.	Nominal Airflow: 25 CFM Comp. Rating: 5 HP Inlet Temp.: 100F Voltage: 115V/1 Ph/60Hz
			Nominal Airflow: 35 CFM Comp. Rating: 7.5 HP Inlet Temp.: 100F Voltage: 115V/1 Ph/60Hz
RF-2057	Refrigerated Dryer	For High inlet temperature air applications (180 Degree F) please reference our "Hi-Temp" series: RF-2049 20 CFM RF-2050 35 CFM RF-2051 50 CFM RF-2052 75 CFM RF-2053 100 CFM	Nominal Airflow: 50 CFM Comp. Rating: 15 HP Inlet Temp.: 100F Voltage: 115V/1 Ph/60Hz
			Nominal Airflow: 100 CFM Comp. Rating: 25 HP Inlet Temp.: 100 F Voltage: 115V/1 Ph/60Hz
RF-2011	Automatic Tank Drain	Electronic control automatically drains tanks at specified interval. Extends tanks life and lowers operating costs.	Pipe Size: 1/4NPT Max. Pressure: 200 PSI Temp. Range: 35-165F Voltage: 115V/1 Ph
M-800	Shop Air Management System	A water, particulate, oil filter and regulator sized to handle the whole shop. For compressors up to 30 HP.	Pipe Size: 3/4NPT Nominal Airflow: 120 CFM Filtration Rating: .01 Micron Max. Pressure: 250 PSI Max. Temp.: 150F
M-810	Shop Air System Particulate Filter	A water trap and particulate filter designed to handle the whole shop. Sight glass and automatic drain.	Pipe Size: 3/4NPT Nominal Airflow: 230 CFM Filtration Rating: 40 Micron Max. Pressure: 250 PSI Max. Temp.: 175F
M-820	Shop Air System Oil Coalescing Filter	A high-efficiency oil removing filter to handle the whole shop. Pop-up element change indicator.	Pipe Size: 3/4NPT Nominal Airflow: 120 CFM Filtration Rating: .01 Micron Max. Pressure: 250 PSI Max. Temp.: 150F
M-830	Shop Air System Diaphragm Regulator	Set line pressure for the whole shop. A high-capacity true diaphragm regulator with high visibility gauge.	Pipe Size: 3/4NPT Nominal Airflow: 250 CFM Outlet Range: 2-125 PSI Max. Pressure: 250 PSI Temp. Range: 40-120F
M-900	Econo-dry Desiccant Dryer System	Economical 2-stage system includes a sub-micronic filter and desiccant dryer.	Pipe Size: 1/2NPT Nominal Airflow: 30 CFM Filtration Rating: .01 Micron Max. Pressure: 125 PSI Max. Temp.: 120F
M-1000	System Supreme Desiccant Dryer System	Supplies clean, ultra-dry, oil free air to the booth. A particulate filter, oil coalescer, desiccant dryer and regulator.	Pipe Size: 1/2NPT Nominal Airflow: 30 CFM Filtration Rating: .01 Micron Max. Pressure: 125 PSI Max. Temp.: 120F
DS-1000	Desiccant Dryer System	4-stage system removes particulate, water, oil and delivers ultra-dry, regulated air to the booth.	Pipe Size: 1/2NPT Nominal Airflow: 20 CFM Filtration Rating: .01 Micron Max. Pressure: 125 PSI Max. Temp.: 120F
M-4095-Q	Replacement Desiccant	Silica gel desiccant beads with color change indicator. Beads go from blue to pink when changing is needed. Low dust.	1 Quart
M-4095G			1 Gallon
M-4097			25 Pounds

MODEL DESCRIPTION PURPOSE SPECIFICATIONS

POINT-OF-USE COMPONENTS



TOOL MOUNT COMPONENTS



<p>M-30/M-40/M-60</p>	M-30	Sub-Micronic Compressed Air Filter	<p>M-30/M-40/M-60 - The ultimate final filter. Removes moisture, particulate and oil aerosols to less than .01 microns in size. Protects refinishing equipment, air tools and plasma cutting equipment. Easily replaceable element.</p> <p>M-C100 - Removes vaporous contaminants from compressed air including hydrocarbon oils, silicone, volatile organic compounds and desiccant dust. Ensures defect free finishing with all of today's premium and water-borne refinishing systems.</p>	<p>Pipe Size: 1/4NPT Nominal Airflow: 45 CFM Filtration Rating: .01 Micron Max. Pressure: 125 PSI Max. Temp.: 175F</p>
	M-40 <i>New</i>	Sub-Micronic Compressed Air Filter		<p>Pipe Size: 3/8NPT Nominal Airflow: 60 CFM Filtration Rating: .01 Micron Max. Pressure: 125 PSI Max. Temp.: 175F</p>
	M-60	Sub-Micronic Compressed Air Filter		<p>Pipe Size: 1/2NPT Nominal Airflow: 100 CFM Filtration Rating: .01 Micron Max. Pressure: 125 PSI Max. Temp.: 175F</p>
	M-C100	Activated Carbon Filter		<p>Pipe Size: 1/2NPT Nominal Airflow: 100 CFM Removal Rating: < .01 ppm Max. Pressure: 125 PSI Temp. Range: 32 – 175 F</p>
<p>AF-4510</p>	LU-4505	Lubricator	<p>Injects a fine stream of oil into air supply to lubricate air tools.</p>	<p>Pipe Size: 1/2NPT Nominal Airflow: 142 CFM Bowl Size: 5 oz. Max. Pressure: 250 PSI Temp. Range: 40-120F</p>
	AF-4510	Water and Particulate Filter	<p>General-purpose filter removes moisture, particulate and oil aerosols. Sight glass and manual drain included.</p>	<p>Pipe Size: 1/2NPT Nominal Airflow: 100 CFM Filtration Rating: 40 Micron Max. Pressure: 250 PSI Temp. Range: 40-160F</p>
<p>M-400</p>	CO-4515	Oil Coalescing Filter	<p>Removes oil aerosols from compressed air stream to .01 microns in size.</p>	<p>Pipe Size: 1/2NPT Nominal Airflow: 50 CFM Filtration Rating: .01 Micron Max. Pressure: 250 PSI Temp. Range: 40-160F</p>
	M-400	Desiccant Dryer	<p>Delivers extremely dry air, dew point to -40F, to critical processes. 2 Qt. Desiccant charge is easily replaced.</p>	<p>Pipe Size: 1/2NPT Nominal Airflow: 30 CFM Filtration Rating: 40 Micron Max. Pressure: 250 PSI Max. Temp.: 120F</p>
<p>RG-4520</p>	AD-1000	Automatic Water Drain	<p>Installs at the bottom of air line drops to collect and drain condensed moisture.</p>	<p>Pipe Size: 1/2NPT Bowl Size: 6 oz. Max. Pressure: 250 PSI Max. Temp.: 160F</p>
	RG-4520	Diaphragm Regulator with Gauge	<p>A true diaphragm, relieving type regulator for precise control of air pressure near the workstation.</p>	<p>Pipe Size: 1/2NPT Nominal Airflow: 100 CFM Outlet Range: 0-125 PSI Max. Pressure: 300 PSI Temp. Range: 40-120F</p>
<p>AC-4525</p>	AC-4525	Air Control Unit	<p>Integral design combines an efficient water and particulate filter with a high-flow diaphragm regulator into a compact unit. Pressure gauge is included.</p>	<p>Pipe Size: 1/2NPT Nominal Airflow: 100 CFM Filtration Rating: 40 Micron Max. Pressure: 150 PSI Temp. Range: 40-125F</p>
	AC-4535	Air Control Unit		<p>Pipe Size: 1/2NPT Nominal Airflow: 100 CFM Filtration Rating: 5 Micron Max. Pressure: 150 PSI Temp. Range: 40-125F</p>
<p>D-12</p> <p>DD-1008</p> <p>RG-4049</p>	D-12	Disposable Spray Gun Filter	<p>Attaches directly to the spray gun and provides a lightweight sub-micronic filter to remove oil, water and particulate.</p>	<p>Pipe Size: 1/4NPT Nominal Airflow: 30 CFM Filtration Rating: .01 Micron Max. Pressure: 100 PSI Max. Temp.: 120F</p>
	DD-1008	Mini Desiccant Dryer	<p>Lightweight disposable desiccant dryer attaches directly to tool. Color change indicator signals replacement.</p>	<p>Pipe Size: 1/4NPT Nominal Airflow: 20 CFM Filtration Rating: 5 Micron Max. Pressure: 125 PSI Max. Temp.: 130F</p>
	AS-4028	Air Tool Filter	<p>Protects valuable high-speed air tools by removing particulates right at the inlet. Extremely light-weight.</p>	<p>Pipe Size: 1/4NPT Nominal Airflow: 25 CFM Filtration Rating: 40 Micron Max. Pressure: 100 PSI Max. Temp.: 200F</p>
	RG-4049	Mini Regulator/Gauge	<p>A true diaphragm, precision regulator that weighs ounces. Attaches directly to tool or spray gun for ultimate control.</p>	<p>Pipe Size: 1/4NPT Nominal Airflow: 25 CFM Outlet Range: 0-125 PSI Max. Pressure: 250 PSI Temp. Range: 40-120F</p>

MAGNA-SPOT® STUD WELDER KITS

THE ULTIMATE DENT REMOVAL TOOLS NOW AVAILABLE IN SEVEN CUSTOM KITS

The Magna-Spot® 1000, 1500 and 2000 Series products all incorporate our exclusive Low-Heat technology, designed for today's high-strength steel unibody vehicles. With plenty of power for any job, these welders virtually eliminate 'burn-through', a common problem associated with other models.



JO1000 - ENTRY KIT



JO1050 - ENTRY-PLUS KIT



JO1500 - PROFESSIONAL KIT



JO1525 - PRO-PLUS KIT



JO1550 - DELUXE KIT



JO2000 - SUPER-PRO KIT



JO2250 - SUPER-PRO PLUS KIT

MAGNA-SPOT® STUD WELDER EXCLUSIVE FEATURES

- ★ Made in USA
- ★ 5-Year Warranty
- ★ Magna Pin System

MPS
technology holds pin in electrode in any position and provides handy pin storage on case.






From our economical 1000 Entry Kit to our Top-of-the-Line 2250 Model, all Motor Guard Stud Welders offer World Class performance, with a choice, for today's collision repair professional.

All welders are designed for the instant welding of Draw Pins, Rivets, Magna Wire® and Round Washers, as well as for the shrinking of stressed material. Lightweight, ergonomic designs - incorporating heavy-duty construction with low heat transfer and a high level of reliability - provide results far superior to existing models and methods.

All Motor Guard Magna-Spot® Welders are Made in the U.S.A. and carry a Five-Year Limited Warranty.

MOTOR GUARD CORPORATION

MAGNA-SPOT® STUD WELDERS

						
Entry	Entry-Plus	Professional	Pro-Plus	Deluxe	Super-Pro	Super-Pro Plus
J01000	J01050	J01500	J01525	J01550	J02000	J02250
120V 1Ø 15A*	120V 1Ø 15A*	120V 1Ø 15A*	120V 1Ø 15A*	120V 1Ø 15A*	120V 1Ø 15A	120V 1Ø 15A
1500A	1500A	1500A	1500A	1500A	2000A	2000A
2%, 1 Sec. On, 60/Hr.						
Duty Cycle	Deluxe					
Magna Slide Hammer®	Entry					
Magna Clamp®	Optional	Optional	Optional	Standard	Optional	Optional
Magna T-Puller®	Optional	Optional	Standard	Standard	Optional	Standard
Magna Rivet Puller®	Optional					
Magna Claw®	Optional					
Draw Pin	Standard					
Trim Rivet	Optional	Standard	Standard	Standard	Standard	Standard
Extension	Optional					
Round Washer	Optional					
Magna Wire®	Optional	Optional	Standard	Standard	Standard	Standard
Shrinking	Optional	Standard	Standard	Standard	Standard	Standard
Draw Pin 2.0mm	Pk/100	Pk/500	Pk/250	Pk/250	Pk/250	Pk/250
Draw Pin 2.5mm			Pk/250	Pk/250	Pk/250	Pk/250
Trim Rivet		Pk/150	Pk/150	Pk/150	Pk/150	Pk/150
Round Washer	Optional					
Magna Wire® 16 Ga.	Optional					
Magna Wire® 12 Ga.	Optional					
Case	Storage		Molded Carry			
Shipping Wt. (Lbs.)	17	19	23	25	25	27

*Select 120V Models Available in 240V 1Ø See Price Sheet

STUD GUN ACCESSORIES



Slide Hammer

Slide made of cast iron. Collet is heat-treated tool steel for maximum grip and extended life.

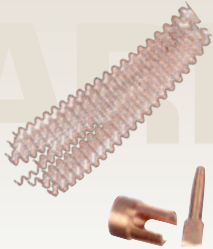
- J20003 Heavy-duty with quick release
- J10003 Standard cam release



Electrodes

Tough copper with highest electrical conductivity.

- J20007 Pin electrode, holds all standard size pins
- J20009 Rivet electrode, for J20012 trim rivets
- J20006 Shrinking electrode, for fast heat
- J20010 Electrode extension kit with M.P.S.



Magna Wire

Steel, copper coated corrugated wire. Welded with the Magna Wire electrode, to pull out long creases evenly with the Magna Claw.

- J20024 16 ga, 1/2 lb pk
- J20025 12 ga, 1 lb pk

Magna Wire Electrode Kit

For welding Magna Wire J20021

Magna Claw

Heavy-duty steel construction, utilizing handle or external pulling source. Unique design pulls the Magna Wire, one "finger" at a time, until the damaged metal is flush with surface. Excellent method for pulling out long, difficult to access creases.

- J20037 Magna Wire Claw, 5 Finger
- J20042 Magna Wire Claw Kit, includes 5 Finger Claw, Magna Wire Electrode Kit and Magna Wire



The Magna Clamp

Constructed from heat-treated hardened steel, this tool features wing nut/self-tightening, making the job fast and easy. J20016



"T" Puller

A compact tool for small damage repair on light-weight metal to reduce overpull. J20017



Trim Rivets

Steel, copper coated rivets. Welded to body panels for installing metal trim strips. A restoration requirement. J20012



Now with **Striker Tip!**TM

Draw Pins

The original Motor Guard Magna-Spot Stud Welder Pins now with the improved Striker TipTM designed to guarantee a consistent, strong weld on all steels. No Other Pin is Stronger. No Other Pin Flexes More Easily. No Other Pin Guarantees a Solid Weld on All Steels.

- J20014 2.0 mm Draw Pins - Pk/500
- J20015 2.5 mm Draw Pins - Pk/500

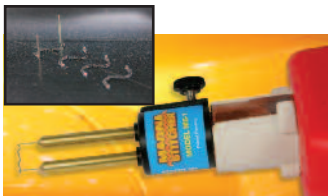


MAGNA-STITCHER PLASTIC REPAIR SOLUTIONS

Magna-Stitcher technology works by welding a rigid stainless steel stake into the surface of the plastic resulting in a permanent repair of the crack. The system can be used to repair bumpers, fascias, spoilers, headlamp and radiator brackets, interior and underbody components, wheel wells, panel mounting tabs and any thermoplastic part.

MS-1-KIT MAGNA-STITCHER PLASTIC REPAIR ADAPTER

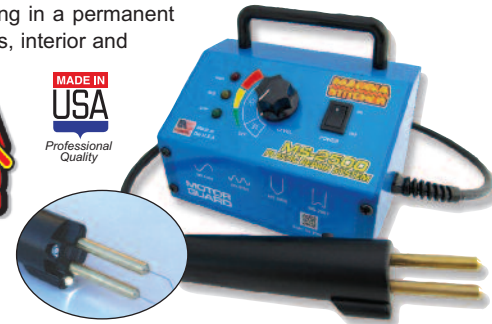
Do Plastic Repair with Your Stud Welder!



The **Magna-Stitcher Adapter** provides an economical solution for plastic repair by turning your stud welder into a plastic repair tool. The Magna-Stitcher fits all popular stud welders and provides all the features of a plastic repair system at a fraction of the cost. The kit also comes with an assortment of **Magna-Stakes**.

MS-1-KIT Features:

- Magna Stitcher Adapter with thumb screw lock
- Assortment of Magna-Stakes; 25/Ea of S, M, V & W shapes
- Handy and durable storage case
- Made in the U.S.A.



MS-2500 MAGNA-STITCHER PLASTIC REPAIR SYSTEM

The **Magna-Stitcher Plastic Repair System** is a complete unit with all the power and accessories needed for structural repair of plastic parts. The **MS-2500** features a powerful work light in the gun to illuminate out of the way areas, a feature not found on most comparable units. The system also comes with an assortment of **Magna-Stakes**.

MS-2500 Features:

- Three power levels for rapid and precise staking on all thermoplastic parts
- High-intensity work light in the grip to illuminate out-of-the way areas
- Assortment of Magna-Stakes; 100/Ea of S, M, V & W Shapes
- 115 VAC 50/60 Hz with low power draw

MS2045 - MAGNA-STITCHER IRONING TIP

Inserts in end of Magna-Stitcher electrode and smooths over stitched areas for quicker, cleaner repairs. Fits Motor Guard and similar competitive units.



REPLACEMENT MAGNA-STAKES					
	ITEM	APPLICATION	PK/50	PK/100	ASSORTMENT
	S-SHAPED STAKE	For Repair of Flat Sections	MS2004	MS2014	MS2040 Contains 100/EA of All Four Stake Shapes
	M-SHAPED STAKE	For Repair of Tabs and Narrow Sections	MS2005	MS2015	
	V-SHAPED STAKE	For Repair of Inside Corners	MS2006	MS2016	
	W-SHAPED STAKE	For Repair of Outside Corners	MS2007	MS2017	



CUT-OFF WHEELS

MAGNA-CUTTER™ for Aluminum

Motor Guard's Magna-Cutter abrasive cut-off wheel has been specially formulated to cut aluminum fast, cool and clean with no loading. A resin-bonded abrasive cut-off wheel specifically designed for cutting automotive aluminum body panels and structural components the Magna-Cutter is available in 3" (JMC300AL) and 4" (JMC400AL) diameters, these Type 1 wheels are made in the U.S.A. of the highest quality abrasives and materials. Unlike standard wheels, they contain no ferrous materials, ensuring contaminant-free cutting of aluminum body panels and structural components. Technicians report that the Magna-Cutter exhibits exceptionally long wheel life and has quickly become an aluminum tool box essential.

Magna-Cutter™ Wheels
Patent Pending



JMC300AL (Pk/5)
3" x .040" x 3/8"
25,000 RPM

JMC400AL (Pk/5)
4" x .050" x 3/8"
19,000 RPM

Magna-Cutter Features:

- Specially Formulated for Aluminum Body Panels & Structural Components
- Cuts Fast, Cool & Clean with No Loading
- Contains no Ferrous Materials, Eliminates Contamination
- Long Wheel Life



Magna-Cutter™ in Action

A full line of Back-up Pad Products for automotive refinishing. Two sizes of molded urethane pads are offered in a variety of hardnesses and facings. These pads feature heavy-duty riveted hubs and are precision balanced for vibration free, flawless sanding. A soft, foam Interface Pad can be added to the 6" Back-up Pad for fine finish sanding and for full contact on irregular surfaces. Other accessories include a stiff, reinforced composite Backing Plate for aggressive sanding and grinding. Completing the line is a versatile Buffing Pad Holder for both lambswool bonnets and foam polishing pads. A hook facing provides a slip-free hold while allowing for quick change of pads.



From Pulling to Painting, Motor Guard Corporation has a product for all of your autobody repair and refinishing needs.

Exclusive Features:

- Full Product Line to Meet All Your Shop Needs
- Highest Quality U.S. Manufactured Products
- Precision Controlled Weight and Balance for Vibration Free Operation
- Ultra Flat Faces for Flawless Sanding
- Innovative Facing Materials Provide Maximum Hold While Allowing for Quick Change of Abrasive Discs

BACK-UP PADS

SELECTION CHART

	MODEL	DESCRIPTION	PURPOSE	SPECIFICATIONS
	BP-1016	MEDIUM BACK-UP PAD 6" FACE DIAMETER REGULAR PROFILE PSA FACE	MEDIUM EDGE PAD FOR PSA BACKED DISCS. FIRM ENOUGH FOR FLAT SURFACES YET SOFT ENOUGH FOR CURVED SURFACES.	DIAMETER: 6" FACE: VINYL HARDNESS: MEDIUM THREAD: 5/16-24 MALE MAX. RPM: 10,000
	BP-1116	FIRM BACK-UP PAD 6" FACE DIAMETER LOW PROFILE PSA FACE	FIRM, LOW PROFILE PAD FOR PSA BACKED DISCS. PROVIDES MAXIMUM FLATNESS.	DIAMETER: 6" FACE: VINYL HARDNESS: FIRM THREAD: 5/16-24 MALE MAX. RPM: 10,000
	BP-1026	MEDIUM BACK-UP PAD 6" FACE DIAMETER REGULAR PROFILE HOOK FACE	MEDIUM EDGE PAD FOR LOOP BACKED DISCS. FIRM ENOUGH FOR FLAT SURFACES YET SOFT ENOUGH FOR CURVED SURFACES.	DIAMETER: 6" FACE: HOOK HARDNESS: MEDIUM THREAD: 5/16-24 MALE MAX. RPM: 10,000
	BP-1126	FIRM BACK-UP PAD 6" FACE DIAMETER LOW PROFILE HOOK FACE	FIRM, LOW PROFILE PAD FOR LOOP BACKED DISCS. PROVIDES MAXIMUM FLATNESS.	DIAMETER: 6" FACE: HOOK HARDNESS: FIRM THREAD: 5/16-24 MALE MAX. RPM: 10,000
	BP-4005	BACKING PLATE REGULAR PROFILE	REINFORCED COMPOSITE PLATE PROVIDES A STRONG, STIFF BACKING FOR AGGRESSIVE SANDING AND GRINDING.	DIAMETER: 5" THICKNESS: .064" CENTER HOLE: 7/8" MAX. RPM: 6,000
	BP-2027	7" BUFFING PAD HOLDER	BUFFING AND POLISHING PAD HOLDER FOR LAMBSWOOL BONNETS AND FOAM POLISHING PADS.	DIAMETER: 7" FACE: HOOK THREAD: 5/8-11 FEMALE MAX. RPM: 2,000
	BP-3026	6" FOAM INTERFACE PAD HOOK FRONT LOOP BACK	SOFT FOAM INTERFACE PAD FOR USE ON 6" HOOK FACED DISCS. FOR FINE FINISH SANDING AND FULL CONTACT ON IRREGULAR SURFACES.	DIAMETER: 6" FACE: HOOK/LOOP HARDNESS: SOFT

SANDING BLOCKS

SB-1 Soft Block



The original flexible sanding block features two different densities to achieve the ultimate in block sanding of curved or irregularly shaped surfaces.

Size: 2-5/8" x 5-1/4"
Application: Wet & Dry Sanding, Color Sanding

WB-1 Wonder Block



A large, ergonomically designed block with a unique profile that offers maximum gripping power over flat to slightly curved surfaces.

Size: 2-1/2" x 6-1/2"
Application: Dry Sanding, Color Sanding, PSA Rolls or Sheets

RK-1 Rocker Block



Wrap a 6" sanding disc around this block for any type of sanding. Features a unique radius edge for contour sanding. Rigid inner layer prevents transfer of finger marks.

Size: 2-3/4" x 6"
Application: Wet & Dry Sanding, Filler Sanding, Color Sanding, Contour Sanding

RKH-1/RKL-1 Hook & Loop Rocker Blocks

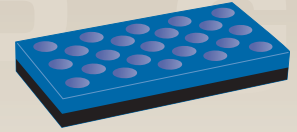


Rocker Block models designed for 6" hook (RKH-1) and Loop (RKL-1) faced abrasive discs. Designed to reduce consumable costs and make quick work of sanding contours.

This unique two-sided block features a blue side with holes which act like a grater for 30% faster cutting. Black side is for less aggressive blocking.

Size: 2-5/8" x 5-1/4"
Application: Fast Blocking, Filler Sanding, Dry Sanding

HT-1 Holey Terror



A firm vinyl side offers extreme curving power for fender crowns and motorcycle tanks. Other side features soft yet dense memory foam to reduce pressure on nibs, louvers, etc.

Size: 2-5/8" x 6-1/2"
Application: Dry Sanding, Color Sanding

MB-1 Memory Block



Utilizes a standard sheet folded into thirds. Unique radius sides lift the edges of the PSA sheet away from the work surface for smoother, more even sanding.

Size: 2-5/8" x 5-3/8"
Application: Wet Sanding, Fine Color Sanding, Contour Sanding

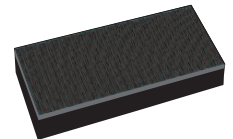
RL-1 Roller Block



Soft and flexible for scuffing areas not accessible to rigid blocks. Designed to evenly distribute pressure, imparting an even tooth over the entire panel in a single pass.

Size: 4" x 6"
Application: Scuffing

BBS-1 Soft Backer Block



BIG BLOCKS

BG6-1/BGK6-1 Standard Big Block



Power up hand sanding with these large, flexible blocks that feature multi-layered construction and radius edges to match contours. BG6-1 (Standard) BGK6-1 (Hook Face)

Size: 2-5/8x6-1/2"
Application: Dry Sanding, Filler Sanding, Blocking

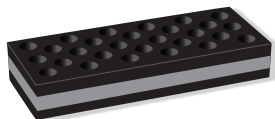
Maximum length Big Block for fast blocking over large areas. Unique multi-layered construction flexes to match curved panels. BG12-1 (Standard) BGK12-1 (Hook Face)

Size: 2-5/8x12"
Application: Dry Sanding, Filler Sanding, Blocking

BG12-1/BGK12-1 Standard Big Block



BGH6-1 Hole-Side Big Block



This one-of-a-kind Big Block features a hole side that acts like a grater for faster cutting. smooth side is for less aggressive blocking and radius edges match body contours.

Size: 2-5/8x6-1/2"
Application: Fast Blocking, Filler Sanding, Dry Sanding

A soft-sided Big Block for fine color sanding over large areas. Rigid inner layer prevents the transfer of finger marks and radius edges match body contours.

Size: 2-5/8x6-1/2"
Application: Wet & Dry Sanding, Color Sanding

BGS6-1 Soft-Side Big Block



BGR-1 Rigid Block



Create the ultimate blocking bar by wrapping an abrasive sheet around this narrow rigid block. Just the right width for power blocking in small areas, this block flexes slightly to follow contours.

Size: 1-1/2x11"
Application: Blocking and Sanding Contours and Small Areas

An extra-rigid sanding block that flexes just enough to follow slightly curved surfaces. A comfort-fit block for high-production blocking and other demanding applications. BGR6-1 (Standard) BGRK6-1 (Hook Face)

Size: 2-5/8x5-1/2"
Application: Aggressive Blocking, Filler Sanding

BGR6-1/BGRK6-1 Rigid Block



BGR12-1/BGRK12-1 Rigid Block



For aggressive two-handed blocking, this rigid sanding block is unequaled. Super flat face flexes just enough to follow slightly curved surfaces. BGR12-1 (Standard) BGRK12-1 (Hook Face)

Size: 2-5/8x11"
Application: Aggressive Blocking, Filler Sanding

Power block the largest panels with speed and power with our longest rigid sanding block. Users of this block report maximum material removal in minimal time. BGR16-1 (Standard) BGRK16-1 (Hook Face)

Size: 2-5/8x16"
Application: Aggressive Blocking, Filler Sanding

BGR16-1/BGRK16-1 Rigid Block



REFINISHING ACCESSORIES



E-4000S

Stripe Eliminator System

Motor Guard's Stripe Eliminator System quickly removes stripes and molding adhesives without damaging the finish. Soft, resilient compound acts like an eraser, absorbing the heat and leaving the surface like new. Universal hardware fits all popular air and electric tools. Made in USA.



E-6080S

Magna-Stripper System

Motor Guard's Magna-Stripper System is the Ultimate Spot Repair Tool for steel body panels. The Magna-Stripper quickly strips Clear Coat, Base Coat, Primer Coat or All Three without damaging the body panel. Soft, resilient compound is impregnated with abrasive, absorbing the heat and leaving the metal like new. Universal hardware fits all popular air and electric tools. Made in USA.



E-6100S

Magna-StripperAL System

Specially formulated for Aluminum, Motor Guard's Magna-StripperAL System is the Ultimate Spot Repair Tool. The Magna-Stripper quickly strips Clear Coat, Base Coat, Primer Coat or All Three without damaging the body panel. The Magna-Stripper feathers like no other method. Universal hardware fits all popular air and electric tools. Made in USA.



SD-1 Pad Pro®

The Spin-Doctor, a unique and innovative method of cleaning foam polishing and cutting pads. Saves time by cleaning the spinning pad while it is on the buffer.

The Magna-Stripper in Action

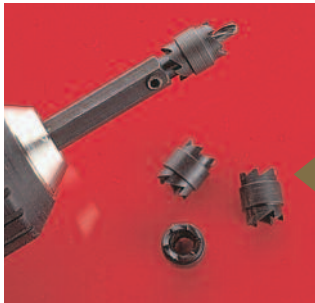
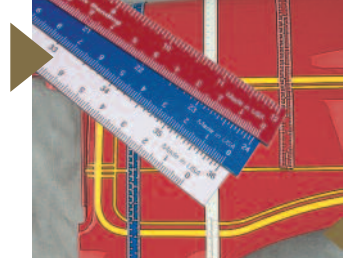


MR-3 - Magna Rules

Magna Rules are flexible magnetic rulers, allowing hands-free measuring of any steel surface, flat or curved. Pinstriping, lettering, sign painting, locating, the applications are endless.

RB-3 - Run Blockers

A rugged non-compressible alloy set of tools for sanding only the highest point of body character lines.

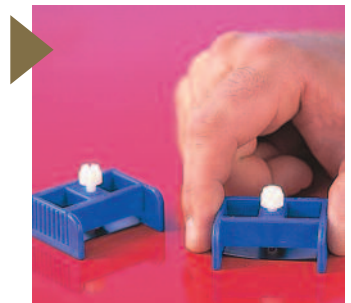


RR-1 - Run Razor

Unique tool for "shaving" away runs, sags and dust particles. Also removes striping tape and plastic repair seams.

Spot Weld Cutters

U.S. high quality high speed for separating body panels from tough OE welds. JMC001 Cutter with JMC003 pilots and springs. JMD001 Magna Drill is self starting with JMD007 replacement double sided slotted drill bits. Both use JMC002 double sided cutters.



A-Series Applicator Guns

Unique collection of guns will accommodate most cartridges available today. Rugged, high-power ratio models designed for professional performance.

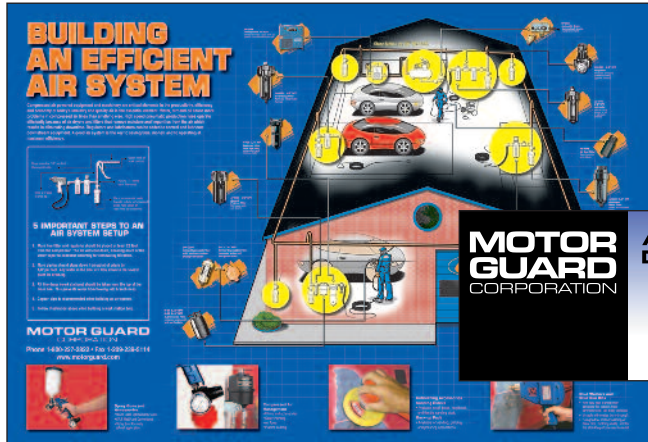
DD-1 Dust Doctor

Revolutionizes hand sanding by providing an instant means of unloading abrasive sheets. Utilizes microfiber technology to pull sanding dust right from the paper. Improves shop air quality by reducing airborne dust. (DD-2 Pack of 2 Pads)



SALES AIDS & PROMOTIONAL ITEMS

JOBBER DISPLAY ITEMS



AIR SYSTEM COUNTERMAT

Model PR-100 20" x 16"

Durable, high-impact mat promotes the sale of air management products by displaying all components needed to build a top quality shop air system.

**MOTOR
GUARD
CORPORATION**

AUTHORIZED DISTRIBUTER

- AIR MANAGEMENT
- MAGNA PRODUCTS
- OPTIMA SPRAY GUNS

www.motorguard.com

WINDOW DECAL

Model PR-110 7" x 3"

Dual-sided decal promotes the availability of Motor Guard products in your store.

APPAREL



HOT-SHOT T-SHIRT

Model PR-120

L, XL, XXL

100% Cotton

T-shirts offer a cool and comfortable way to promote Motor Guard products. Small logo on front and bold Hot-Shot graphics on back.



PRODUCT DISPLAYS

A variety of point-of-sale display packages present Motor Guard products to your customers with color and impact.

MODEL	DESCRIPTION
M-45-KIT	Clean Air Filter Kit 1/4 NPT Counter Display
M-100-KIT	Clean Air Filter Kit 1/2 NPT Counter Display
DP-2000	Point-of-Use Filter/Regulator Display w/ Product
DP-3000	Optima Spray Equipment Display Board
DP-4500	Air Management Display Board w/ Product
D-12-2	Disposable Spray Gun Filter Counter Display
RR-1	Run Razor Counter Display
RB-3	Run Blocker Counter Display
AP-1	Sanding Block Assortment – (5) Popular Blocks
AP-2	Sanding Block Assortment – (6) Popular Blocks
AP-3	Sanding Block Assortment – (8) Popular Blocks
AP-4	Sanding Block Assortment – (6) Big-Blocks
AP-5	Sanding Block Assortment – (6) Rigid Blocks
MS2040	Magna Stake Value Pack



**Filtration Systems
Magna Products**



580 Carnegie Street
Manteca, CA 95337
Toll Free 800 227 2822
209 239 5114 Fax
www.motorguard.com
info@motorguard.com